

7.1.2. THE INSTITUTION HAS FACILITIES AND INITIATIVE

Sr. No

CONTENT

- 1 Use of LED Bulbs, Tubes and Generator**
- 2 Vermi Compost Plant**
- 3 Water Conservation**
- 4 Green Campus initiatives**
- 5 Disabled- Friendly, Barrier Free College Environment**

7.1.2. THE INSTITUTION HAS FACILITIES AND INITIATIVE

1. USE OF LED BULBS, TUBES AND GENERATOR

If we want to stop climate change we need to switch to renewable and sustainable sources of energy as soon as possible. Use of less electricity appliances is one step towards conservation of energy and money. Yashwantrao Chavan Mahavidyalaya, Karmala use less electricity consuming appliances and generator for back up electric supply and takes care the switches are turned off when not in use.



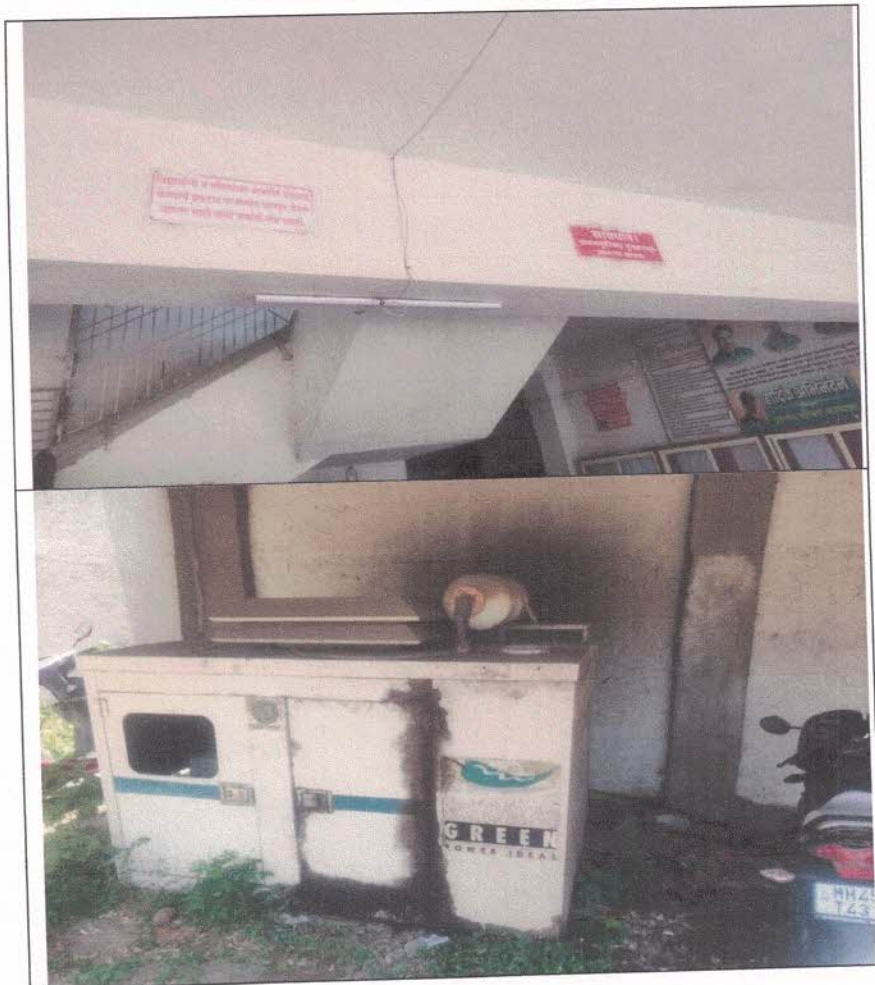

Co-Ordinator
IQAC
Yashwantrao Chavan Mahavidyalaya,
Karmala, Tal. Karmala; Dist. Solapur




Principal
Yashwantrao Chavan Mahavidyalaya,
Karmala, Tal. Solapur.

7.1.2. THE INSTITUTION HAS FACILITIES AND INITIATIVE

Switching towards alternative source of energy and use of
Generator and LED bulbs




Co-Ordinator
IQAC
Yashwantrao Chavan Mahavidyalaya,
Karmala, Tal. Karmala Dist. Solapur




Principal
Yashwantrao Chavan Mahavidyalaya
Karmala, Tal. Solapur.

7.1.2. THE INSTITUTION HAS FACILITIES AND INITIATIVE

2. VERMI COMPOST PLANT

Yashwantrao Chavan Mahavidyalaya, Karmala has set up a Vermi compost plant which decomposition process using various species of worms, usually red wigglers, white worms, and other earthworms, to create a mixture of decomposing vegetable or food waste, bedding materials, and vermicast.




Co-Ordinator
IQAC
Yashwantrao Chavan Mahavidyalaya,
Karmala, Tal. Karmala Dist. Solapur





Principal
Yashwantrao Chavan Mahavidyalaya
Karmala, Dist. Solapur.

7.1.2. THE INSTITUTION HAS FACILITIES AND INITIATIVE

3. WATER CONSERVATION

Construction of Water Bands was undertaken by the institute to increase the ground water level of Shivaji nagar and Vidya nagar areas in karmala. Majority of the area dependent on under water resource using tube well and these rain water harvesting bands were constructed near the college ground. Rain water harvesting is collection and storage of rain water that runs off open grounds, etc. This water run off can be either stored or recharged into the ground water.




Co-Ordinator
IQAC
Yashwantrao Chavan Mahavidyalaya,
Karmala, Tal. Karmala, Dist. Solapur




Principal
Yashwantrao Chavan Mahavidyalaya
Karmala, Tal. Solapur.

7.1.2. THE INSTITUTION HAS FACILITIES AND INITIATIVE




Co-Ordinator
IQAC
Yashwantrao Chavan Mahavidyalaya,
Karmala, Tal. Karmala Dist. Solapur





Principal
Yashwantrao Chavan Mahavidyalaya
Karmala, Tal. Solapur.

7.1.2. THE INSTITUTION HAS FACILITIES AND INITIATIVE

4. TREE PLANTATION FOR GREEN CAMPUS

Tree plantation is recognized as one of the most engaging, environmentally-friendly activities. To tackle environmental issues like deforestation, erosion of soil, desertification in semi-arid areas, global warming and hence enhancing the beauty and balance of the environment Yashwantrao Chavan Mahavidyalaya, Karmala take tree plantation every year.




Co-Ordinator
IQAC
Yashwantrao Chavan Mahavidyalaya,
Karmala, Tal. Karmala Dist. Solapur




Principal
Yashwantrao Chavan Mahavidyalaya
Karmala, Dist. Solapur.

7.1.2. THE INSTITUTION HAS FACILITIES AND INITIATIVE




Co-Ordinator
IQAC
Yashwantrao Chavan Mahavidyalaya,
Karmala, Tal. Karmala, Dist. Solapur




Principal
Yashwantrao Chavan Mahavidyalaya
Karmala, Tal. Solapur.

7.1.2. THE INSTITUTION HAS FACILITIES AND INITIATIVE

5. DISABLED- FRIENDLY, BARRIER FREE COLLEGE ENVIRONMENT

Beautification of the college campus improves the attitude of the society and students towards the college. This has direct impact on the admission rate. The college sets an example for other institutions. We proudly say that last five year there has been no Divyang student in our college.




Co-Ordinator
IQAC
Yashwantrao Chavan Mahavidyalaya,
Karmala, Tal. Karmala Dist. Solapur




Principal
Yashwantrao Chavan Mahavidyalaya
Karmala, Dist. Solapur.

7.1.2. THE INSTITUTION HAS FACILITIES AND INITIATIVE



DIVYANGJAN FRIENDLY RAMP



Financial Assistance to a Blind student

Mr. Somath Kamble B.A.III student of history department was given financial assistance of rupees 5000/- by Prof. Miss, Sarla Chavan in the presence of college principal and Mr. Milind Phand President, Vidya Vikas Mandal, Karmala.




Co-Ordinator
ICAC
Yashwantrao Chavan Mahavidyalaya,
Karmala, Tal. Karmala Dist. Solapur




Principal
Yashwantrao Chavan Mahavidyalaya,
Karmala, Tal. Solapur.